

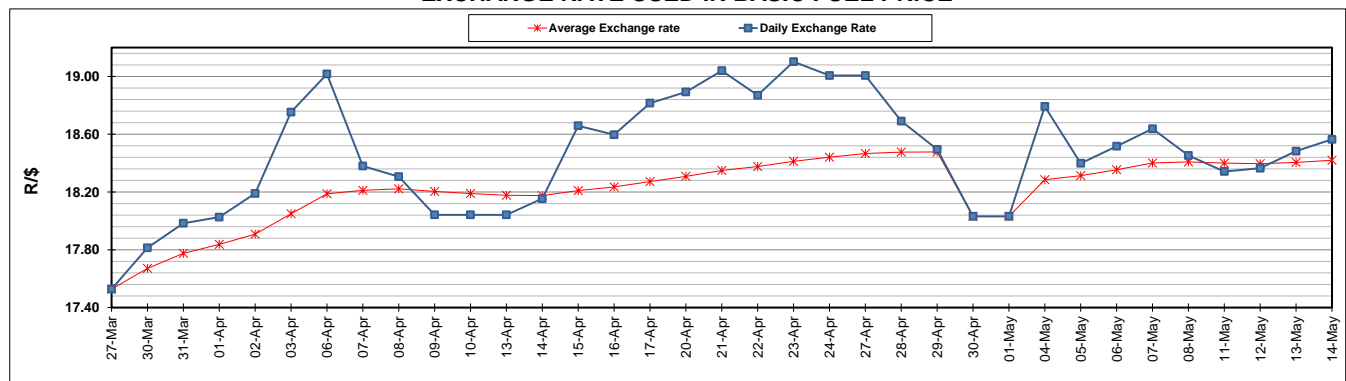
	PETROL 95 ULP	PETROL 93 ULP & LRP	DIESEL 0.05%	DIESEL 0.005%	ILL. PAR.
GAUTENG PUMP PRICE (SA c/l) AS FROM 06/05/2020	1,222.000	1,202.000	-	-	-
WHOLESALE PRICE (SA c/l) AS FROM 06/05/2020	-	-	1,108.560	1,117.960	449.828
SINGLE NATIONAL MAXIMUM RETAIL PRICE	-	-	-	-	543.000
BASIC FUEL PRICE - 14/05/2020 (SA c/l)	421.497	398.769	406.582	415.904	321.467
PRESS RELEASE CONTRIBUTION TO BFP 06/05/2020 - 14/05/2020 (SA c/l)	274.770	264.770	357.630	367.030	245.128
UNIT OVER/(UNDER) RECOVERY - 14/05/2020 (SA c/l)	(146.727)	(133.999)	(48.952)	(48.874)	(76.339)
AVERAGE BASIC FUEL PRICE 30/04/2020 - 14/05/2020	387.175	369.898	360.477	369.887	251.325
AVERAGE UNIT OVER/(UNDER) RECOVERY 30/04/2020 - 14/05/2020	(49.133)	(41.855)	55.698	53.871	74.894

ANALYSIS MOVEMENT OF AVERAGE OVER/(UNDER) RECOVERY

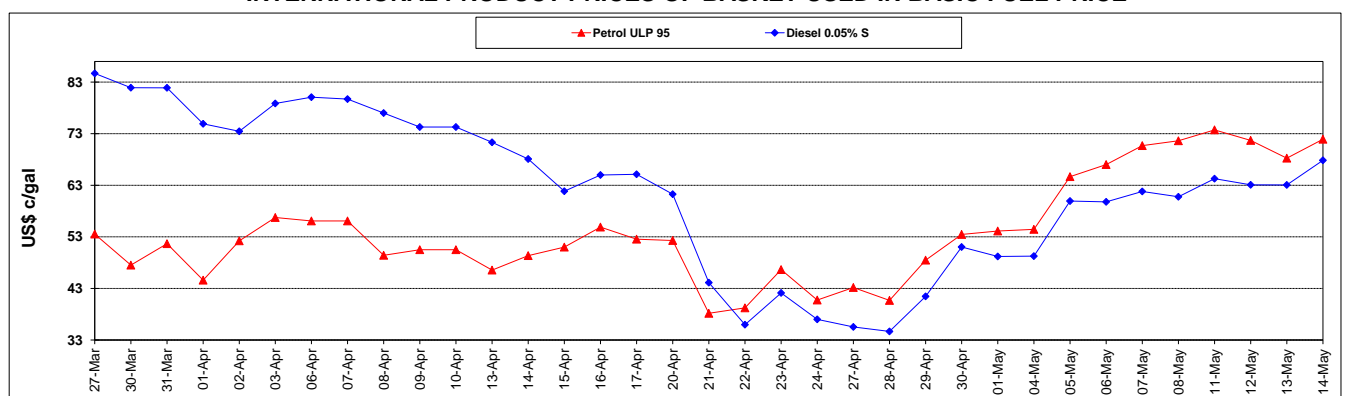
	PETROL 95	PETROL 93	DIESEL 0.05%	DIESEL 0.005%	ILL. PAR.
- MOVEMENT IN INTERNATIONAL PRODUCT PRICES	(50.343)	(43.012)	54.571	52.713	74.108
- MOVEMENT IN EXCHANGE RATE	1.211	1.157	1.127	1.157	0.786
AVERAGE UNIT OVER/(UNDER) RECOVERY 30/04/2020 - 14/05/2020	(49.133)	(41.855)	55.698	53.871	74.894

R/\$ EXCHANGE RATE - (R/\$18.5646 - 14/05/2020)

EXCHANGE RATE USED IN BASIC FUEL PRICE



INTERNATIONAL PRODUCT PRICES OF BASKET USED IN BASIC FUEL PRICE



BASIC FUEL PRICE IN SA CENTS PER LITRE

